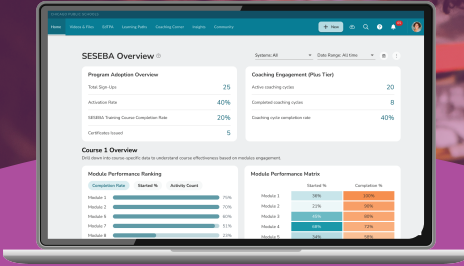
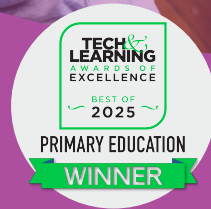


torsh



Unlock Your Students' Language Potential

Practical, proven strategies to help every Dual Language Learner succeed.



SESEBA

POWERED BY: **torsh**

SESEBA | Self-Evaluation Supports for Emergent Bilingual Acquisition

IN PARTNERSHIP WITH

R | RUTGERS NIEER



22% of young children in the US are DLLs, and they are 50% less likely to meet reading proficiency standards by 3rd grade without the right support.

What is SESEBA?

SESEBA (Self-Evaluation Supports for Emergent Bilingual Acquisition) is a research-backed framework designed to help all early childhood educators, not just ESL specialists, support dual language learners through simple self-assessment and goal setting.

The Roadmap

A research-backed framework that gives you the specific "how-to" for supporting Multilingual Learners.

The Game Film

A self-reflection tool that uses video to help you see exactly what's working in your classroom.

The Bridge

A system designed to help you maintain a student's home language while accelerating their English proficiency.

What SESEBA Means for Teachers

- ✔ **End the Guesswork:** Know what's working—your data shows you.
- ✔ **Build Confidence:** 92% of teachers report feeling more capable supporting DLLs.
- ✔ **Save Time:** 10 bite-sized modules (20 min. each) designed for planning periods.
- ✔ **Earn Credit:** Gain PD hours and micro-credentials for work you're already doing.

Build English success on a foundation of home language strength.

Sign up for our free Foundation Modules today: torsh.co/seseba



info@torsh.co



www.torsh.co